

SUPPLY SOLUTIONS PROVIDER FOR STEEL PLANT INVESTMENT PROJECTS

Contents

- ▶ Preface
- ▶ İzmir Factory
- ▶ References
 - EAF/LF (Electric Arc & Ladle Furnace)
 - VD/VOD (Vacuum & Oxygen Degassing)
 - BF/DRI (Blast Furnace & Direct Reduction)
 - CCM (Continuous Casting Machine)
 - FTP (Fume Treatment Plant)
 - RHF (Re-heating Furnace)
 - Rolling Mills
 - Strip Process Lines
- ▶ Historical Data
- ▶ Business Proportion
- ▶ Major Clients
- ▶ Contacts



Preface

FEMATEK is now ten years old. The Company was established in 2006, to provide European quality products and services to clients in steel industry, while competing with Asian suppliers on price level and lead time.

Since its foundation, FEMATEK has aimed to be best “second tier” supplier of equipment to global Original Equipment Manufacturers and Final Clients. To achieve this goal, Fematek has invested constantly in its people, assets and systems while serving its clients. Over time, our business structure and capabilities have evolved and improved in order to keep up with the changes in the market. Nevertheless our aim and enthusiasm has remained the same.

Today FEMATEK is working with top global OEMs in steel industry and directly with leading steel producers local and global. We are unique in our position in Turkey and abroad, in terms of ability to work both with FCs and OEMs, without any conflicts and with the highest integrity. Our reputation is our greatest asset and we will always look after it without compromise. Our success so far could not be possible without the support of our partners; our clients and our suppliers. We are thankful for your belief in FEMATEK and trust in us with your most important and delicate projects.

We are young and still learning, yet our experience so far is serving us well in reducing CAPEX cost for new steel plant investments. We are working relentlessly to improve our capabilities both in manufacturing and sourcing, and looking forward to continue working with you for the next ten years and beyond.

Best regards.

Chairman



FEMATEK WORKSHOP

- 10,000 m² closed production area.
- 35,000 m² total land.
- 25 Engineers, 130 blue collar of which 50 is certified welders.
- 3,5 x 12 and Ø1,6 meter machining capacity.
- ISO 9001 & EN-ISO 3834 & EN 1090-2 & EN 1090-3.
- Expertise in Steel Plant Investment; more than 50,000 tons equipment supplied.
- Fast track delivery, logistic and on-site support.
- Quality Guarantee for material and manufacturing.
- Strong transparent financial structure.
- Long - lasting supplier for top OEMs for more than 10 years.







Hi-Tech automated "WELDING STATION" enables us to achieve high level welding capacity w/o any manual defects.



Service center before manufacturing:
CNC cutting, bending, chamfering for all
type of raw materials.



Product Transfer Area for both semi-finished goods and final packed products, wide enough for tons of equipment.



Water Cooled Equipment
Production Line.





Up to 5 m. ducts are welded in Welding Station, CNC and automated both with SAW and MIG.



All LF & EAF roofs we manufacture are assembled with all auxiliaries and tested in our Workshop.

After welding and stress relieving, machining is done internally before mechanical assembly.





After machining, dimensional controls are being done by FEMATEK Quality Team.



Mechanical assembly and running test of a Ladle Car.

references

EAF/LF

VD/VOD

BF/DRI

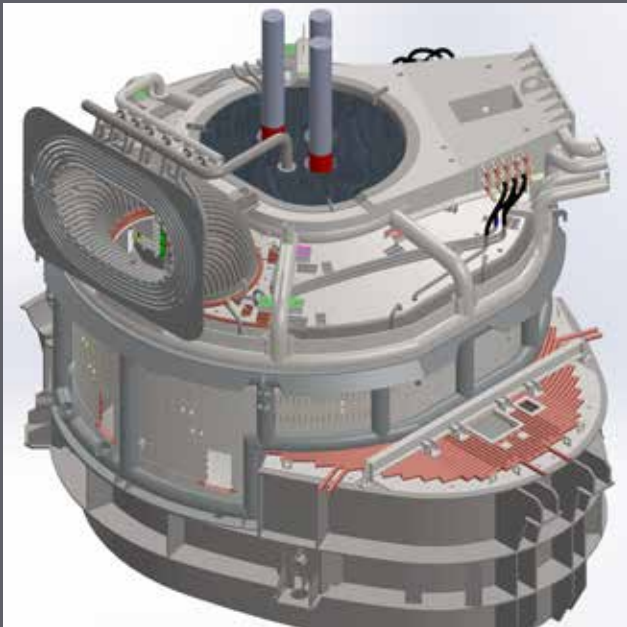
CCM

FTP

RHF

RM

SPL



Detailed design is made as per our client's process design in our technical office for manufacturing.

The modern EAFs are equipped with innovative, energy saving panels specially manufactured to avoid water leakages and to increase panel lifetime.



Complete water leakage and flow tests are being done with hi-tech equipment to be sure of functional performance.



Shipping fully assembled equipment is our standard to decrease erection time, whenever it is practical.



Bimetal materials need special skill to process. We have this experience to produce innovative parts as per our client's needs.

We always use EU certified seamless pipes to manufacture water cooled equipment with special welders.



Ready to leave our workshop only after passing very tough quality control procedures successfully including pressure and flow tests.



Plant	Final Customer	Country	Year
EAFLF	AL EZZ	Egypt	2007
EAFLF	HALYVOURGIKI	Greece	2007
EAFLF	BMZ STEEL	Belarus	2008
EAFLF	SIDERURGICA BARRA MANSA SA	Brasil	2008
EAFLF	CHELYABINSK	Russia	2008
EAFLF	JSC "ASHA METALLURGICAL PLANT"	Russia	2008
EAFLF	TOKYO STEEL	Japan	2009
EAFLF	KUWAIT STEEL	Kuwait	2009
EAFLF	JSC SEVERSKY	Russia	2009
EAFLF	OJSC	Russia	2009
EAFLF	SIRIA METAL INDUSTRIES	Syria	2009
EAFLF	DNEPSTEEL	Ukraine	2009
EAFLF	MMK-ATAKAŞ	Turkey	2010
EAFLF	IRAN ALLOY STEEL	Iran	2010
EAFLF	SIRIA METAL INDUSTRIES	Syria	2011
EAFLF	SAUDI IRON AND STEEL CO. (HADEED)	KSA	2011
EAFLF	İZMİR DEMİR ÇELİK	Turkey	2011
EAFLF	ASİL ÇELİK	Turkey	2011
EAFLF	EURAJOEN ROMU OY	Finland	2011
EAFLF	DEACERO SA DE CV	Mexico	2012
EAFLF	BVK LIMITED LIABILITY COMPANY	Russia	2012
EAFLF	DONETSKSTEEL	Ukraine	2012
EAFLF	HANDLOWA MAG-FERUM	Poland	2012
EAFLF	NUCOR STEEL MEMPHIS	Usa	2013
EAFLF	INDUSTRIAL INVESTMENT Co	Egypt	2014
EAFLF	RS SILICON	Bosnia	2015
EAFLF	SEIXAL	Portugal	2016
EAFLF	ARVEDI	Italy	2016



VD Tanks are always tested with special care at all stages of manufacturing.

Sufficient handling infrastructure to manufacture and assemble oversize equipment.



Pre- assembly of oversize equipment VOD Tanks.



All kind of Silos, Bunkers and Hoppers are pre-assembled and tested before delivery.



BF/DRI

References

Plant	Final Customer	Country	Year
DRI	EZZ STEEL	Egypt	2010
DRI	SUEZ STEEL	Egypt	2011
DRI	EZZ STEEL	Egypt	2013
VOD (RH)	AHMSA	Mexico	2014
VD/VOD	EVRAZ	Canada	2016
VD/VOD	TULA	Russia	2016





■ Functional tests are part of our internal acceptance procedures.

■ We have a strong on-board piping expertise, and add value to our client's design where possible



CCM

Pre-assembled Roller Tables.



■ We fulfill leakage and flow test procedures for CCM segments.



All exclusions that are sent by our clients are carefully checked and assembled on the machines.

Experienced at manufacturing all types of spray cooling zones for billets and blooms



Dummy Bar Parking Device completely assembled before shipment.



We show utmost care for special packing of machines and equipment we produce.

Plant	Final Customer	Country	Year
CCM	VALOUREC	France	2006
CCM	ASIL CELIK	Turkey	2007
CCM	GHC	UAE	2007
CCM	NUCOR	USA	2007
CCM	ARCELOR	Italy	2008
CCM	ARCELOR	Poland	2009
CCM	SUEZ STEEL	Egypt	2011
CCM	ACERIAS NACIONALES DEL ECUADOR S.A.	Ecuador	2012
CCM	NUCOR	USA	2012
CCM	GERDAU CORSA	Mexico	2013
CCM	JSC EVRAZ	Russia	2014
CCM	KARDEMİR	Turkey	2014
CCM	SIMEC	Mexico	2016



Caps and elbows are specially produced (hot forged) to fit up with seamless pipes.



Properly packed water cooled duct ready for shipment.



Pre-assembly of sliding sleeve (movable elbow) which is necessary to fit up all accessories and weld on assembly.



Complete assembly of a FTP line.



FTP

Unique high production capacity for Water Cooled Equipment.

References

Plant	Final Customer	Country	Year
FTP	CHELYABINSK METALLURGICAL PLANT	Russia	2011
FTP	INCOPRO DO BRASIL	Brasil	2014
FTP	OUTOKUMPU INOX AB	Sweden	2014
FTP	SABIC-HADEED	KSA	2015
FTP	AQS-ALGERIAN QATARI STEEL	Algeria	2016
FTP	SIMEC	Mexico	2016

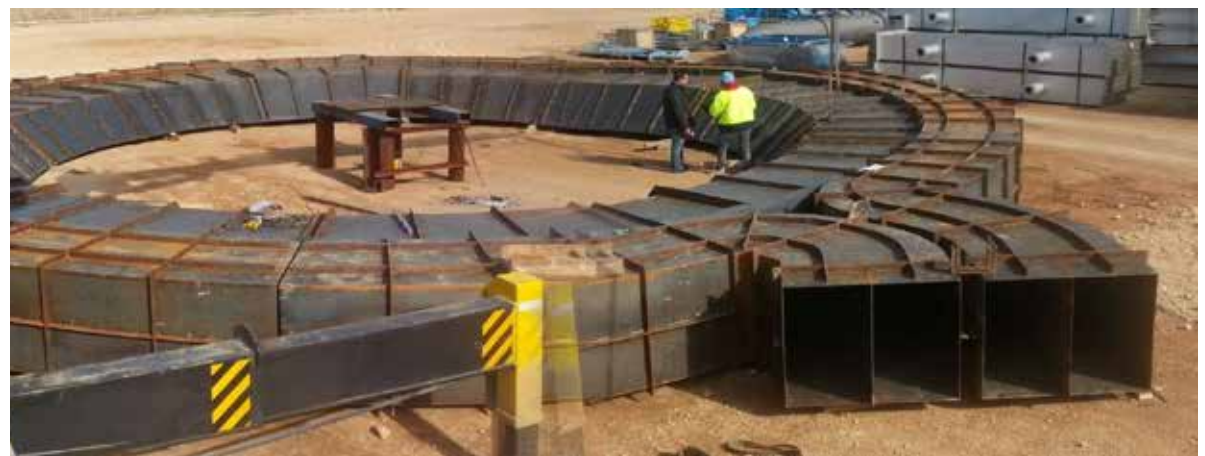


RHF

We are aware of mechanical and thermal stresses of Furnace elements, which is why we are a major supplier of many OEMs for years regarding RHF's



Specialized RHF projects are handled by experienced project managers in our company.

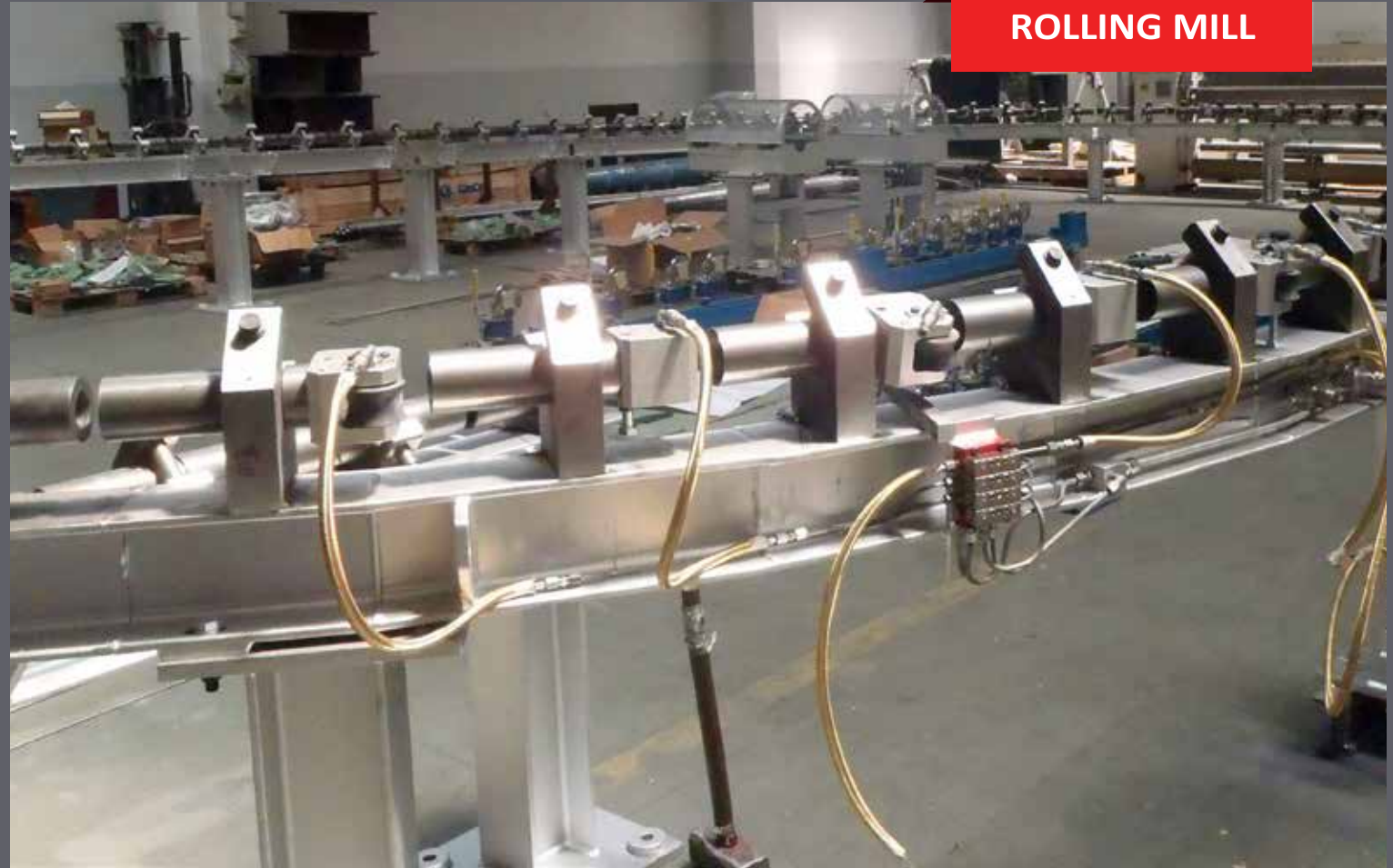


Plant	Final Customer	Country	Year
RHF	ARCELOR	Poland	2006
RHF	DUFERCO LA LOUVIERE	Belgium	2006
RHF	BALBOA	Spain	2007
RHF	GHC	UAE	2007
RHF	UMMC	Russia	2007
RHF	ACINDAR	Argentina	2007
RHF	DUNAFER	Hungary	2008
RHF	EZZ STEEL	Egypt	2009
RHF	EZZ STEEL	Egypt	2009
RHF	ARCELOR MITTAL-STEELTON	USA	2011
RHF	GERDAU	Brasil	2011
RHF	RAJHI STEEL INDUSTRIES	KSA	2011
RHF	GERDAU ACOS LONGOS S/A	Brasil	2011
RHF	ACEROS DE GUATEMALA, S.A.	Guatemala	2012
RHF	V&M	Brasil	2012
RHF	OJSC	Belarus	2014
RHF	SHADEED IRON AND STEEL LLC	Omman	2014
RHF	SUMITOMO SOUTHERN TUBE LLC	USA	2014
RHF	KARDEMİR	Turkey	2014
RHF	ASİL ÇELİK	Turkey	2015
BAF	ÇEMTAŞ	Turkey	2016
BAF	TMK-ARTROM	Romania	2016



Casting items also supplied and assembled on the machines as per client's requirements.

Fully assembled wire rod line curved conveyor, including on-board piping.



ROLLING MILL

Enough space and handling capacity for pre-assembly Cooling Bed over 100 m.



Inox on-board piping is also one of our expertise for special Rolling Mill equipment.

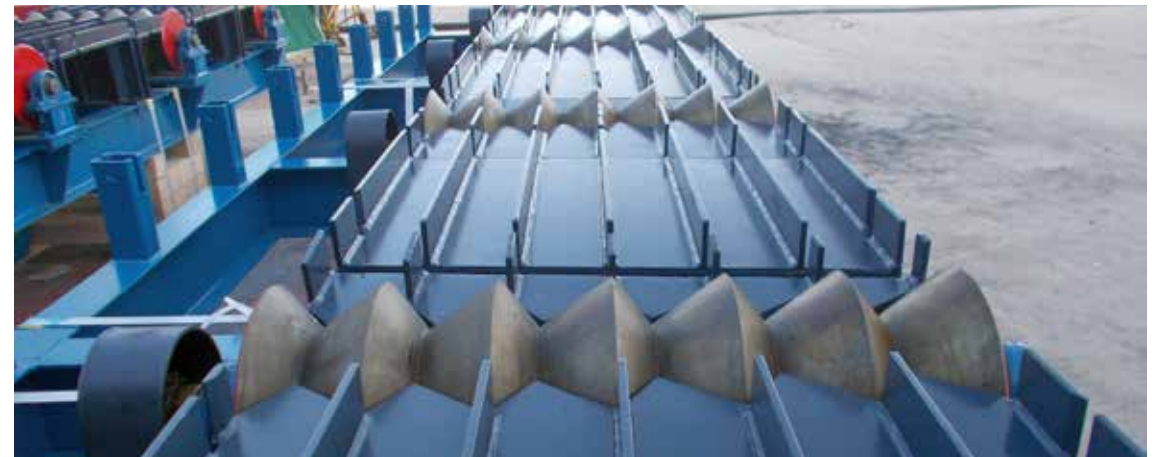
ROLLING MILL



Fully assembled gearbox for Rolling Mill.



Heavy supporting structures for Rolling Stands are manufactured and assembled in our Workshop.





Reels for wire rod coil transfer.



ROLLING MILL

An assembled and tested cooling bed.

Inlet Roller Table assembled.



Final checks of a roller table with insulated covers.

Plant	Final Customer	Country	Year
Rolling Mill	GHC	UAE	2007
Rolling Mill	NUCOR	USA	2007
Pipe Plant	JESCO	KSA	2008
Finishing Lines	ARCELOR	France	2009
Finishing Lines	ASPO	Italy	2009
Finishing Lines	LUIGI	Italy	2009
Finishing Lines	ACRONI	Slovenia	2009
Rolling Mill	SCAW METAL	South Africa	2009
Pipe Mill	DNEPROSTEEL LLC	Ukraine	2011
Aluminum Rolling Mill	ALERIS	Belgium	2012
Finishing Lines	NUCOR STEEL	USA	2013
Pipe Mill	NUCOR STEEL SOUTH CAROLINA	USA	2013
Pipe Mill	BENTELER	USA	2013
Aluminum Rolling Mill	GORDON ALUMINUM INDUSTRIES INC.	USA	2014
Finishing Lines	ANNABA	Algeria	2014
Rolling Mill	ASİL ÇELİK	Turkey	2015
Rolling Mill	SIMEC	Mexico	2016

STRIP PROCESS LINES



Fully assembled Bridle Units.



Steering Units.

Roller table for Hot Strip Mill.



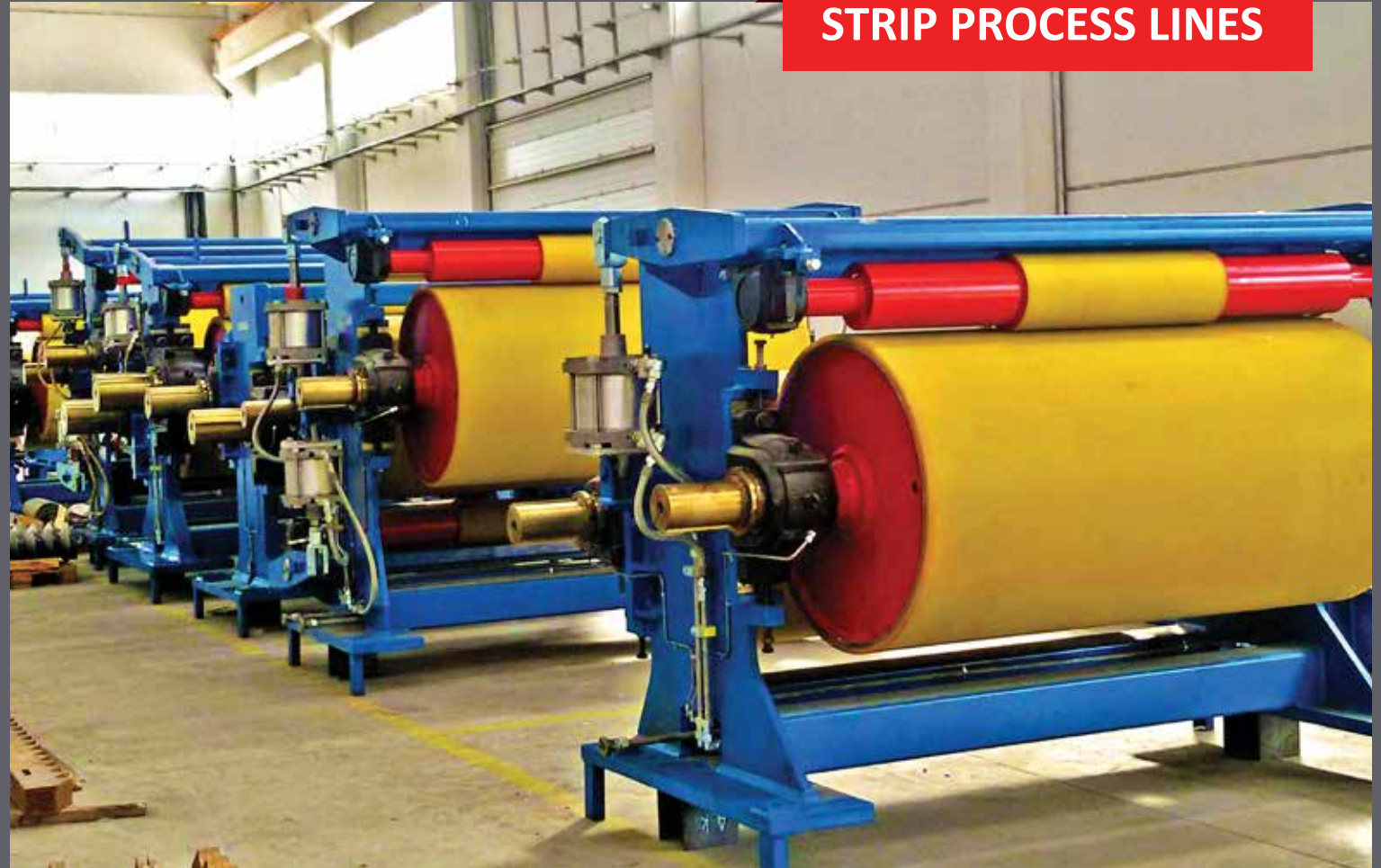
Pinch Roll assembled.



STRIP PROCESS LINES



Decoiler assembled on site after shipping from our factory.



Capacity to handle several machine assembly at the same time; a set of Bridle Units.

Process Tanks under final assembly



Coil Tilting Machine under functional test.



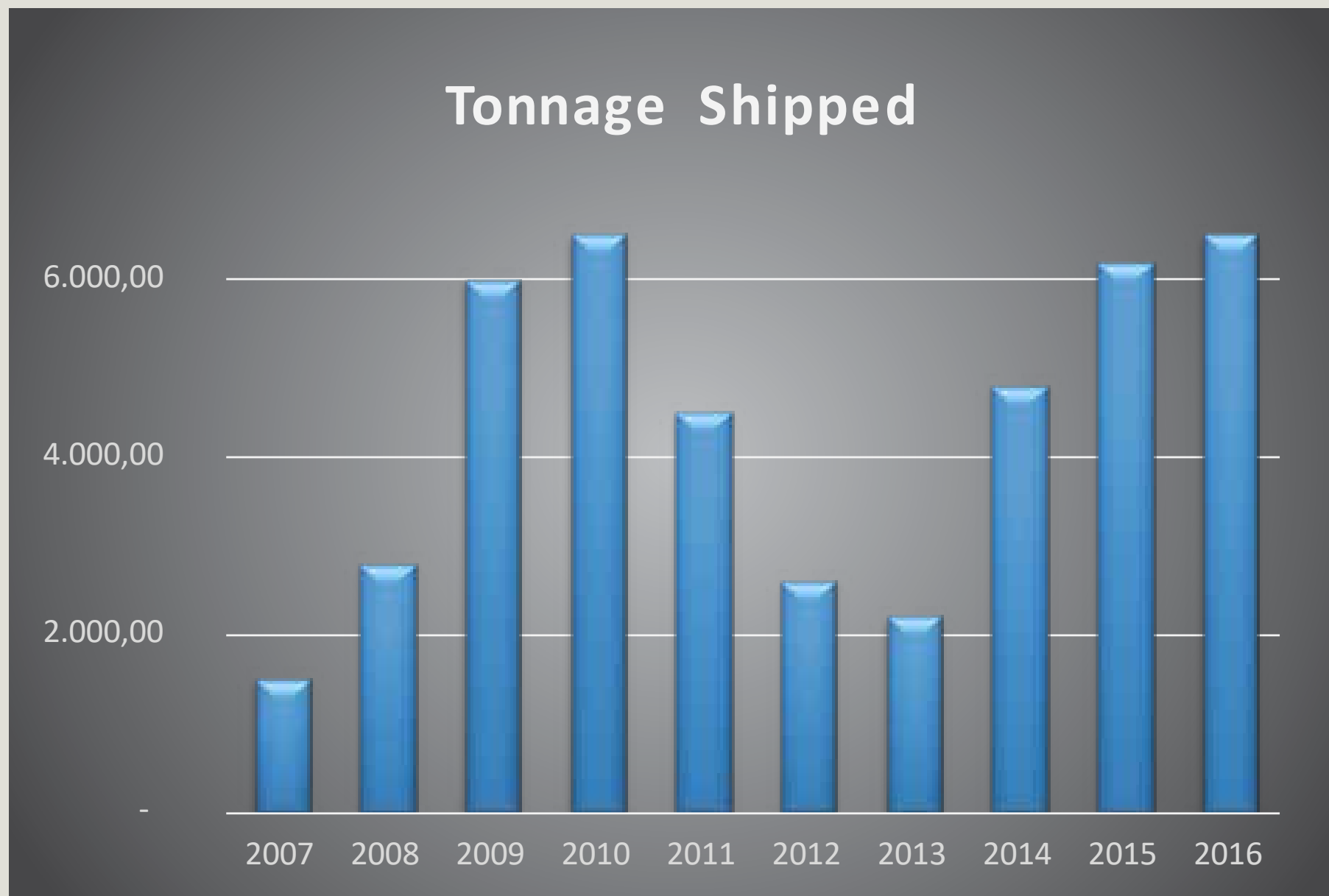
HDGL Furnace assembled on site.



Fixed Cars for Galvanizing Line.

Plant	Final Customer	Country	Year
Slab Caster	ARCELOR	France	2007
HDGL	TEZCAN	Turkey	2007
HDGL	LUCCINI	Italy	2008
HDGL	ARVEDI	Italy	2009
Flat Complex	MMK-ATAKAŞ	Turkey	2010
HDGL	THY-MARCINELLE	Belgium	2012
Aluminum Mill	ALERIS	Belgium	2013
Process Tanks	NUCOR	USA	2014
Strip Process Lines	ATAKAŞ	Turkey	2015
BAF	ATAKAŞ	Turkey	2016
CGL2	ERDEMIR	Turkey	2017



**Since 2006**

- Over 200 Employees
- More than 5,000 machines shipped
- More than 50,000 tons of export
- Strong Financial Structure

BUSINESS STRUCTURE

STEEL PLANT INVESTMENT PROJECT

FC or OEM

OEMs for Engineering
Automation & Noble-Technological
Equipments:

**CONTINUOUS RELATIONS and
BUSINESS WITH ALL OEMS**

FEMATEK for Non-Noble Equipments
(pre-offer based on reference
drawings/description):

**IN ORDER TO REDUCE %20-30
OVERALL CAPEX BUDGET**

VALUE PROPOSITION

Fematek is a leading
Turkish supplier of
equipment that aims to:

- Deliver European
OEM-Quality Equipment.
- At prices competitive
with the Far East.
- In the same time zone as
our clients.
- Logistic & after sales
services.
- Highly responsive and
client oriented.
- Reducing total
investment cost for
OEMs and FCs via
competitive prices for
non-noble equipment
production.

MAJOR CLIENTS





Head Office:

Akatlar, Park Maya, Carlton 17 D:11, 34355
Beşiktaş / İstanbul / Türkiye
Tel : +90 212 351 08 09
Fax: +90 212 351 05 09

Factory:

Ankara Asfaltı 26. km. No:297 Kemalpaşa
Organize Sanayi Bölgesi 35170
Kemalpaşa / İzmir / Türkiye
Tel : +90 232 878 79 18
Fax: +90 232 878 79 19

www.fematek.com